



*jordan fishwick*

1 Hayescroft Gardens, M20 2AA  
Offers In The Region Of £1,300,000





## Hayescroft Gardens Didsbury

Offers In The Region Of  
£1,300,000



An impressive detached family home forming part of the hugely desirable Hayescroft Gardens, an exclusive, private and gated development set within several acres of woodland and yet still within easy reach of both Didsbury and West Didsbury villages. Stunningly finished and presented to an excellent standard, this substantial family home boasts generously proportioned rooms, a great sized rear garden, block paved driveway and integral double garage.

The accommodation comprises a spacious entrance hallway, two lovely separate reception rooms, a wonderful living/kitchen space with 2 sets of bi-fold doors opening to the rear garden, the kitchen being fitted with a contemporary range of units and a large breakfast bar with granite work tops and a full range of Neff integrated appliances. Off the kitchen is a useful utility room with access to the integral double garage. In addition, there is a downstairs WC off the entrance hall.

On the first floor the large landing leads to the principal bedroom suite with a 'Juliette' balcony, dressing room with fitted wardrobes and a stunning full en-suite bathroom complete with a bath and separate walk-in shower. The second bedroom also enjoys a beautiful en-suite, with a further three bedrooms accessed off the landing and the main luxurious family bathroom.

The finish throughout is to the highest standards with stylish features such as underfloor heating, feature lighting and high quality sanitaryware. \*No Onward Chain\*

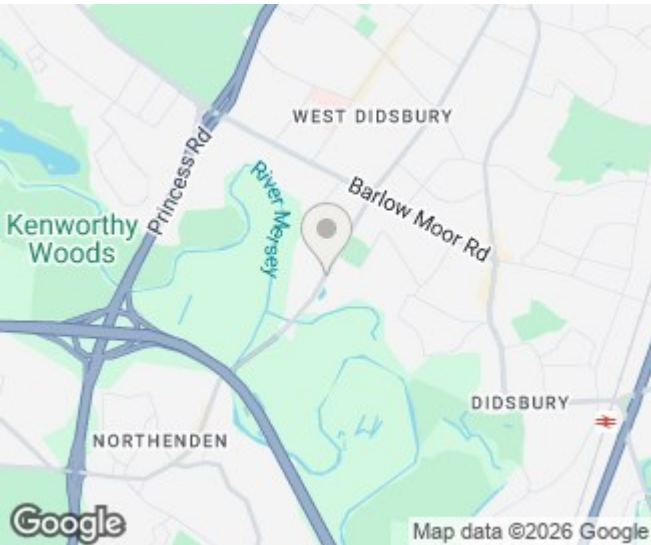





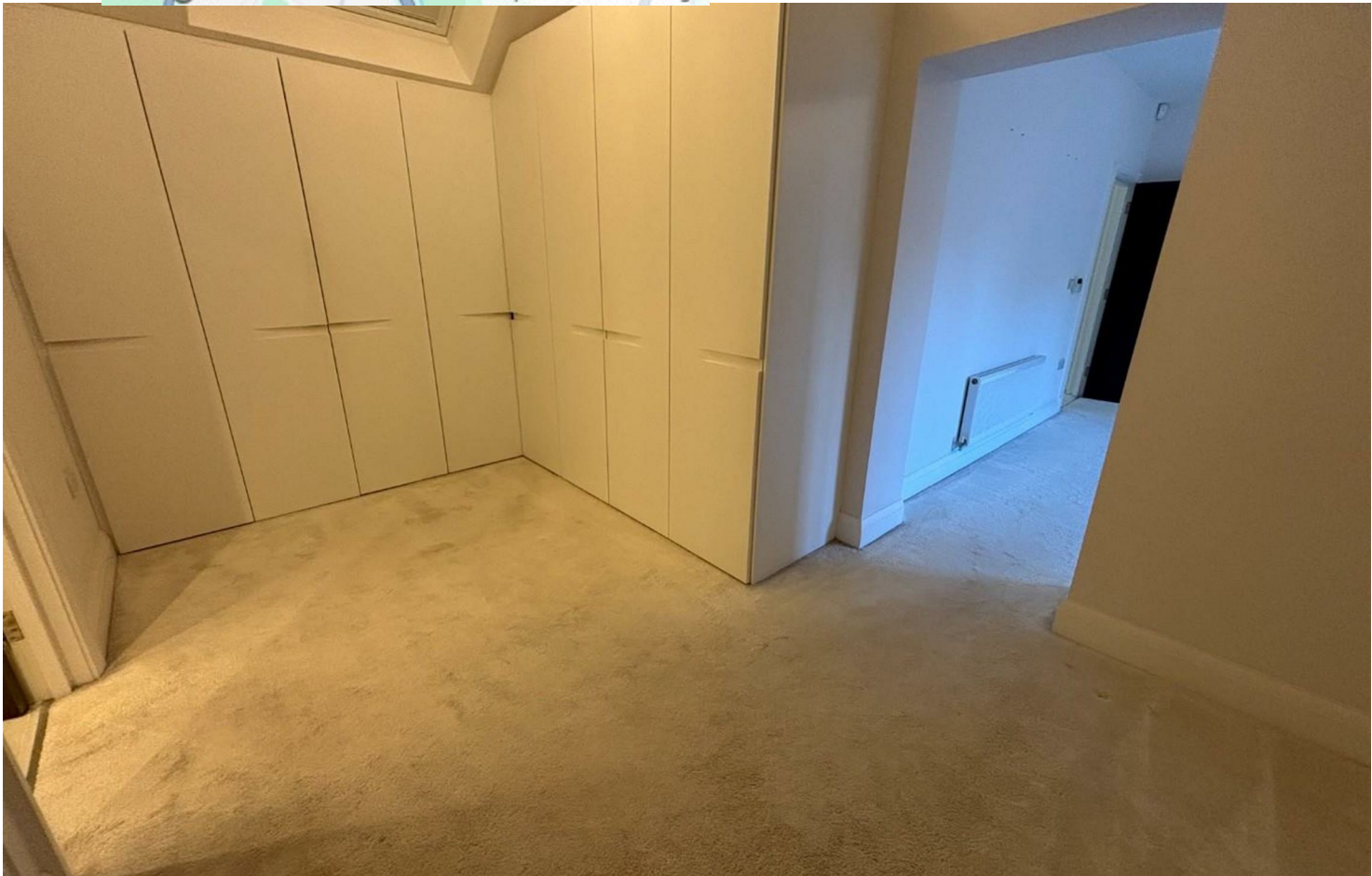




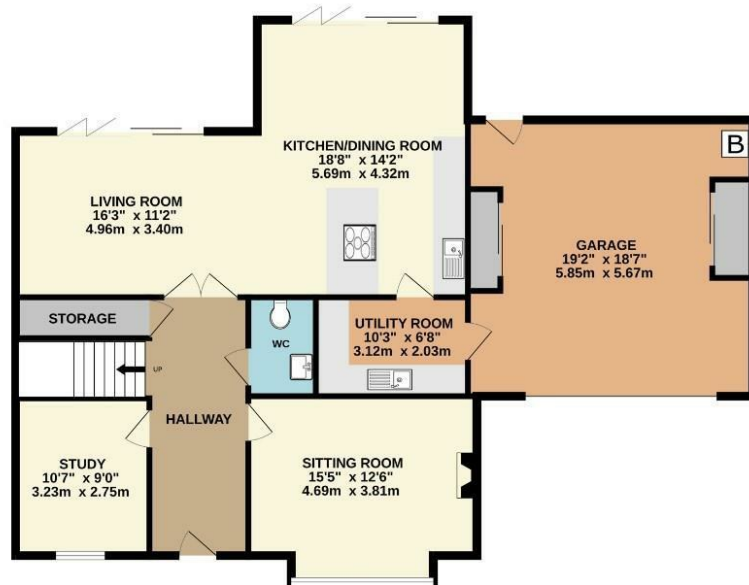
- Superb detached family home
- Exclusive gated development
- Five bedrooms
- Three bathrooms & downstairs WC
- Wonderful open plan living/kitchen space
- Two separate reception rooms
- Utility & integral double garage
- Generous gardens & block paved driveway
- High specification throughout
- No onward chain



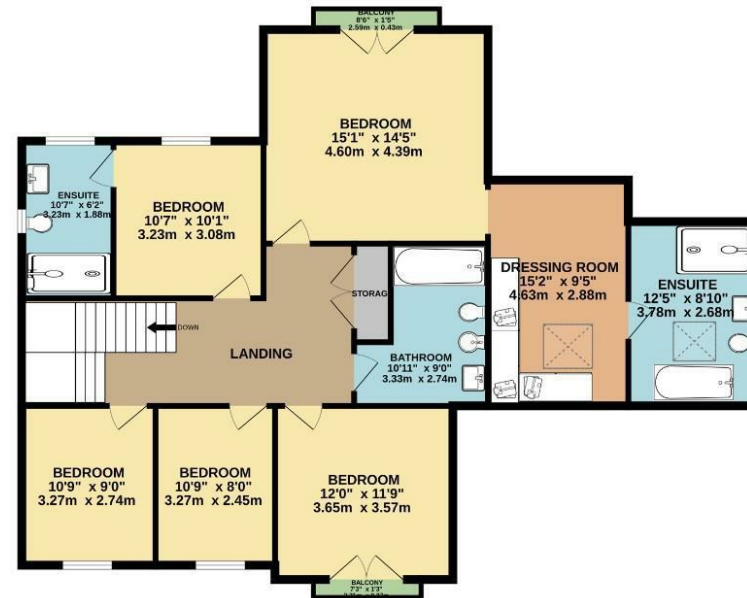
Energy Efficiency Rating		
	Current	Potential
Very energy efficient - lower running costs		
(92 plus) <b>A</b>		
(81-91) <b>B</b>	<b>87</b>	<b>87</b>
(69-80) <b>C</b>		
(55-68) <b>D</b>		
(39-54) <b>E</b>		
(21-38) <b>F</b>		
(1-20) <b>G</b>		
Not energy efficient - higher running costs		
<b>England &amp; Wales</b>	EU Directive 2002/91/EC 	



GROUND FLOOR  
1353 sq.ft. (125.7 sq.m.) approx.



1ST FLOOR  
1249 sq.ft. (116.0 sq.m.) approx.



TOTAL FLOOR AREA : 2602 sq.ft. (241.7 sq.m.) approx.  
Measurements are approximate. Not to scale. Illustrative purposes only  
Made with Metropix ©2025



These particulars are believed to be accurate but they are not guaranteed and do not form a contract. Neither Jordan Fishwick nor the vendor or lessor accept any responsibility in respect of these particulars, which are not intended to be statements or representations of fact and any intending purchaser or lessee must satisfy himself by inspection or otherwise as to the correctness of each of the statements contained in these particulars. Any floorplans on this brochure are for illustrative purposes only and are not necessarily to scale.

Offices at: Chorlton, Didsbury, Disley, Hale, Glossop, Macclesfield, Manchester Deansgate, Manchester Whitworth Street, New Mills, Sale, Wilmslow and Withington

36-38 Alderley Road, Wilmslow SK91JX  
**01625 532000**

wilmslow@jordanfishwick.co.uk  
www.jordanfishwick.co.uk